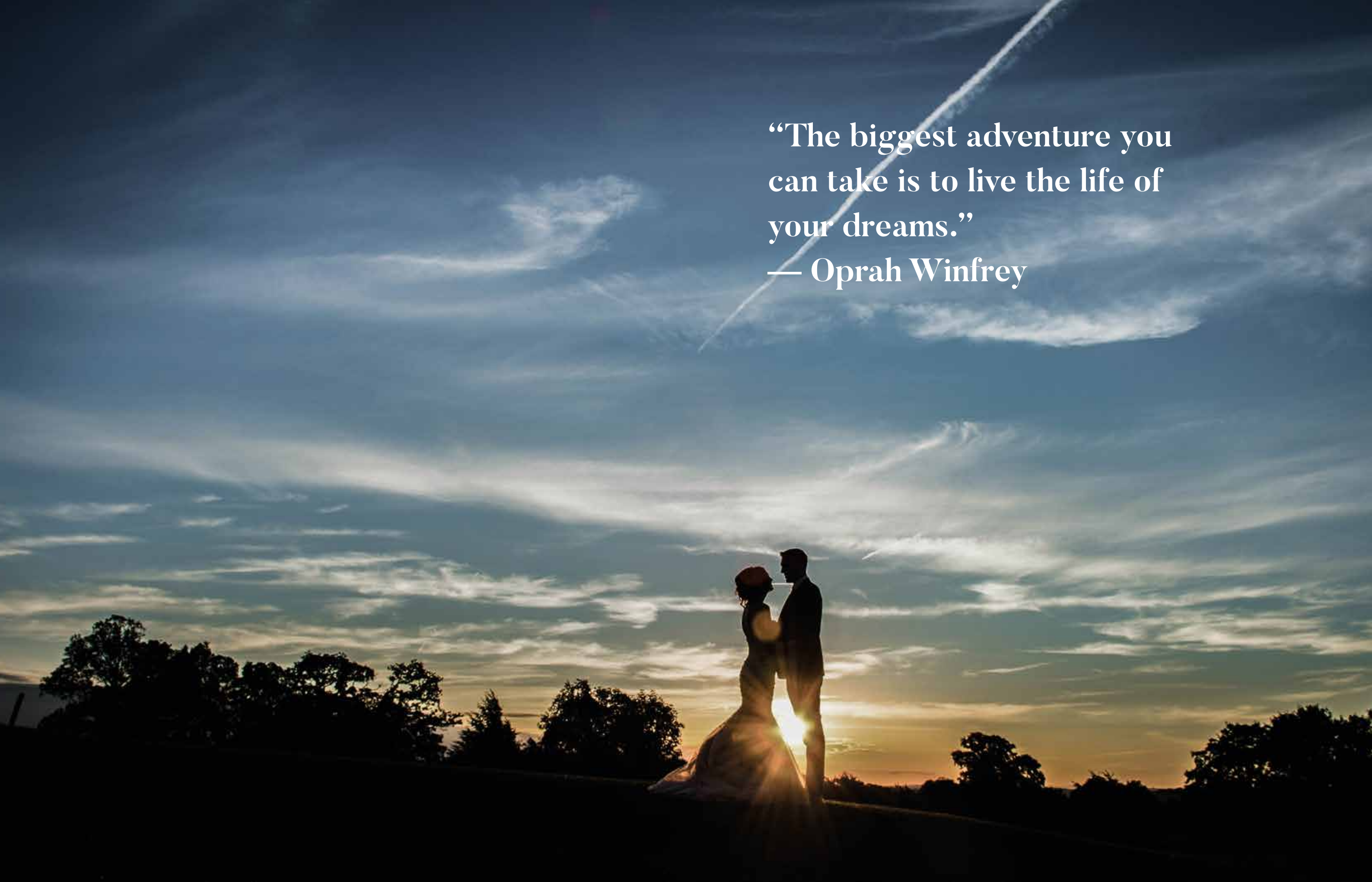


**This is your day.**

“The biggest adventure you  
can take is to live the life of  
your dreams.”  
— Oprah Winfrey





# This is *your* day.

Your wedding day should be just that – your day to do whatever you choose, wherever you fancy, with whomever you please.







## So what does *your* perfect day look like?

Time spent with a handful of your closest family and friends, sipping cocktails and tucking into a sharing feast from our outdoor, wood-fired oven....topped off with some competitive croquet on our front lawn on a warm summer's day, or cosied up with blankets, storm lanterns and steaming mugs of mulled wine on a chillier winter's evening?

Perhaps you prefer the idea of a big bash with your ceremony, celebratory meal and evening frolics all under one roof?

Maybe a day just isn't long enough? How about making a weekend of it with relaxed feasting, lazy brunches and plenty of time in-between to make the most of our golf course, spa, pool and bubbly outdoor hot tub.

The thing is, no matter what your hopes for your big day, we'll go out of our way to make sure that they become reality, and that *your* day plays out *your* way.





# Yours to experience

We know the importance of peaceful, private spaces for your wedding party to dress, rehearse or just settle their nerves.

With floor to ceiling windows framing breathtaking views, sumptuous seating, dressing areas with full length mirrors and expansive bathrooms featuring double sinks, roll top baths and waterfall showers, our individually-designed historic suites are perfect for pre-wedding preening and photoshoots (champagne in hand, of course).

Seeking a secluded spot to run through your vows? Take your pick from the refined Duke of Gloucester or understated Earl of Warwick suites. And if you'd like a dose of Dutch courage to keep you company, the Berkeley Bar's the place for you.

Don't forget – we're always here for you if you need us.





# Yours to treasure

When it comes to the ceremony itself, you'll be spoiled for choice. There's the architecturally stunning Tewkesbury Abbey just a stone's throw away...a whole host of quaint local churches in nearby Cotswolds villages...or perhaps you like the idea of enjoying your entire day with us.

Whether you choose a smaller celebration with your cherished few, or an impressive ceremony for 150, we have a great selection of spaces just waiting for you to say "I will".



WEDDINGS AT TEWKESBURY PARK



# Duke of Gloucester

Sitting in the heart of the original 18th century manor house with a huge bay window, crystal chandeliers and classic décor, the Duke of Gloucester is the ideal setting for your exclusive ceremony of up to 30 guests.



# Cotswolds Suite

If you just can't bring yourselves to leave out your second cousin twice removed, and you've got a big group of friends, then you're going to need our Cotswolds Suite.

It's totally up to you whether you choose to use the whole suite for up to 150 guests, or would prefer to divide it into one or two of its smaller suites for a more pared back ceremony. Either way, you can be sure of a stunning backdrop, bags of daylight and complete privacy.

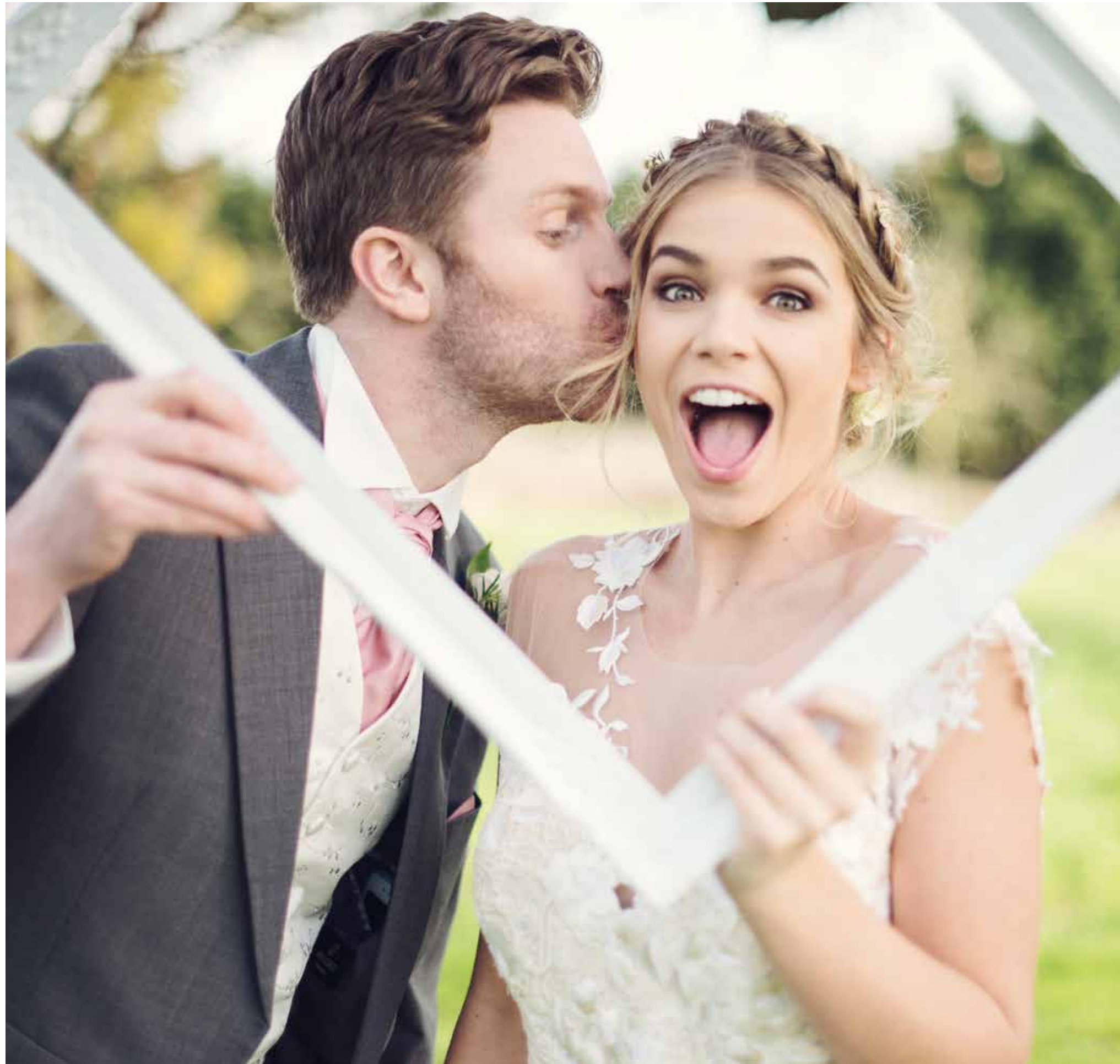
WEDDINGS AT TEWKESBURY PARK



# Yours to capture

Perched at the top of the hill and surrounded on all sides by 165 acres, our grounds provide a majestic backdrop for your wedding photos.

Hop on a golf buggy and set out in search of a secluded spot tucked away from the rest of the world. Join your guests for a group shot on the croquet lawn. Or simply survey the surroundings, bubbly in hand, on our Mr & Mrs deckchairs.







## Yours to savour

Your wedding day is a great opportunity to treat family and friends to some top-notch food and drink. Whether you're looking for a traditional wedding breakfast, with your guests served individually at their tables, or you like the idea of a feasting menu, with everyone tucking into sharing platters and even carving their own locally sourced joint of meat, we guarantee plates brimming with mouth-watering delights – lovingly prepared and perfectly presented.

Don't just take our word for it – we'll invite you to join us for an indulgent tasting experience with our top-class head chef and his team to make sure that we come up with a menu that's just right for you.



WEDDINGS AT TEWKESBURY PARK



# Cotswolds Suite & Berkeley Bar

Sunny days enjoying canapés and Champagne on the wraparound terrace. Sipping on apéritifs in the Berkeley Bar. Dining, toasting and celebrating beneath shimmering chandeliers in the Cotswolds Suite. This option boasts three exclusive-use spaces, hosting up to 150 for your decadent meal and 150 more into the evening.

We know that even the most amazing venue needs an individual touch too. So here you can make the most of dimmable, colour-changing lights to complement your chosen colour scheme, a leading-edge speaker system inside and out, and a multi-screen video wall – ideal for showcasing the day's events or images of you both through the years.







## Evening delights

When it comes to your evening celebrations, we'll make sure anyone arriving later in the day feels just as much a part of things, with a tempting array of treats to tuck into.

A Cotswolds picnic with homemade scotch eggs, quiches, scones and clotted cream? How about a pizza feast cooked in our outdoor, wood-fired oven? Or a night at the fair, with burgers and hot dogs cooked on our oil-drum BBQ, toffee apples and more candyfloss than you can shake a stick at?

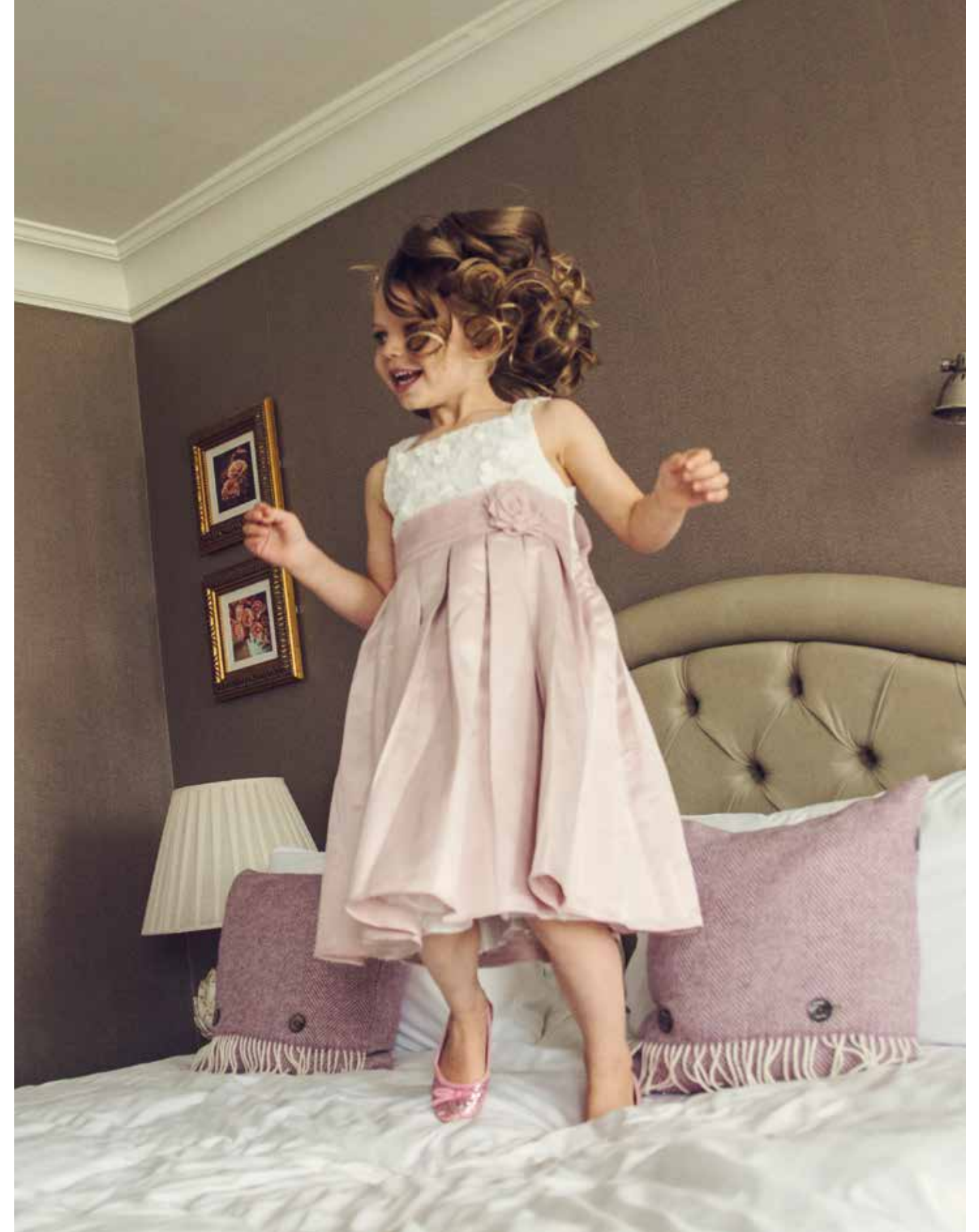
Well-fed and well-fuelled, the dancefloor awaits. With ample space for a DJ and live band, you'll be beautifully accompanied for your first dance, and your footloose guests won't be able to resist joining in at the first opportunity. Not their cup of tea? There are plenty of comfy seats a little away from the music in your private Berkeley Bar.





# Yours to indulge

At the end of a long day of celebrations, our 93 suites and rooms are ready and waiting for your guests (and you) to unwind in comfort.



WEDDINGS AT TEWKESBURY PARK





## Suite dreams

Sink into a sud-filled roll top bath before diving into a Hypnos bed. Open the curtains to see the morning mist and sip coffee (or more bubbles) thinking ahead to everything that awaits. After experiencing the soundest of slumbers and enjoying the opulence of our historic suites, you'll never want to leave.

Your guests, too, will have an experience they won't forget. All rooms enjoy stunning views, great showers and plump, inviting beds. We'll happily discuss special wedding rates for your friends and family, so everyone can make the most of your big day.



# Yours, ever after

This is the first day of the rest of your life. So relish it. Take some time to indulge in a Cotswolds breakfast and relax with a revitalising spa treatment, round of golf, or just curl up with a book in one of our cosy lounges.

Not jetting off straight away? Why not make a long weekend of it and stay on with family and friends to enjoy all that our independent, family-owned hotel has to offer?

Before setting off for home, or your honeymoon, make another lasting memory by planting your very own rose in our scented garden – a reminder of your special day waiting for you to visit for years to come.











# How to find us

## By road

Postcode for Sat Nav: GL20 7DN

Generally the easiest way to reach us is by taking the M5. Leave this at junction 9 and at the roundabout turn onto the Ashchurch Road (A438), signed Tewkesbury. Continue to follow the A438 into Tewkesbury town centre. At the roundabout take the first exit onto Church Street. Continue onto Gloucester Road and then turn right onto Lincoln Green Lane. In front of you lies our ½ mile private drive.

## By train

Our nearest train station is Ashchurch for Tewkesbury, which is just 10 minutes' drive away. From here you can travel directly to Birmingham and Bristol.

We'll happily organise a taxi to come and collect you – just give us a call on 01684 272300.

**Trains to**  
Birmingham – 40 mins  
Bristol – 1 hr  
Cardiff – 1hr 25 mins  
Oxford – 2 hrs  
London Paddington – 2 ½ hrs

## By plane

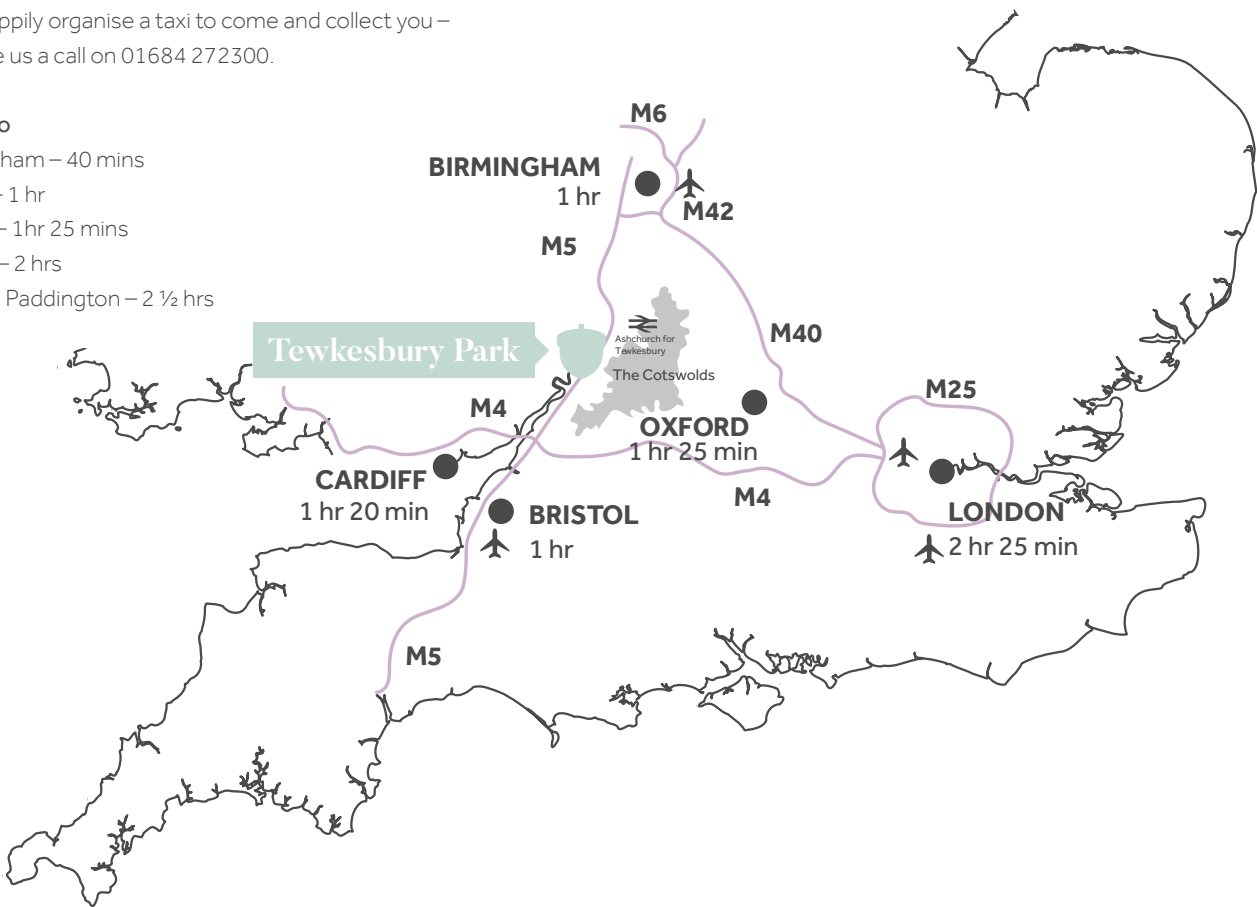
If you're visiting us from further afield, your nearest airport to fly into will be Birmingham Airport (49 miles north of us) or Bristol Airport (60 miles south of us).

## By helicopter

Lucky you - we have a heli-pad on site and our co-ordinates are:

51°58'56.0"N 2°10'18.6"W 51.982221, -2.171839

Please just let us know in advance so that we can clear the area of golfers. Then we'll come and collect you and your luggage in one of our fleet of golf buggies.







---

Tewkesbury, Gloucestershire  
[www.tewkesburypark.co.uk](http://www.tewkesburypark.co.uk) • 01684 272300